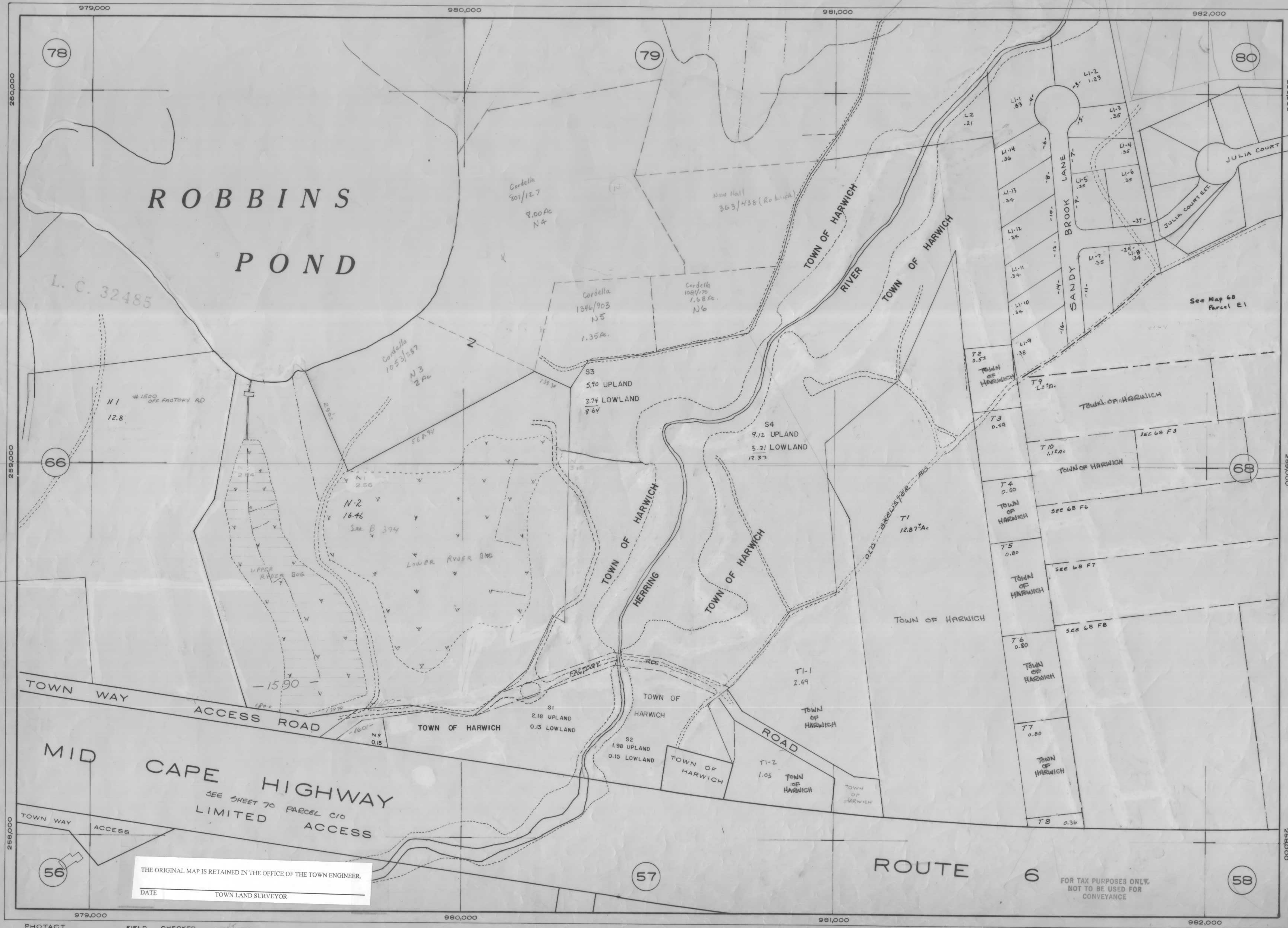




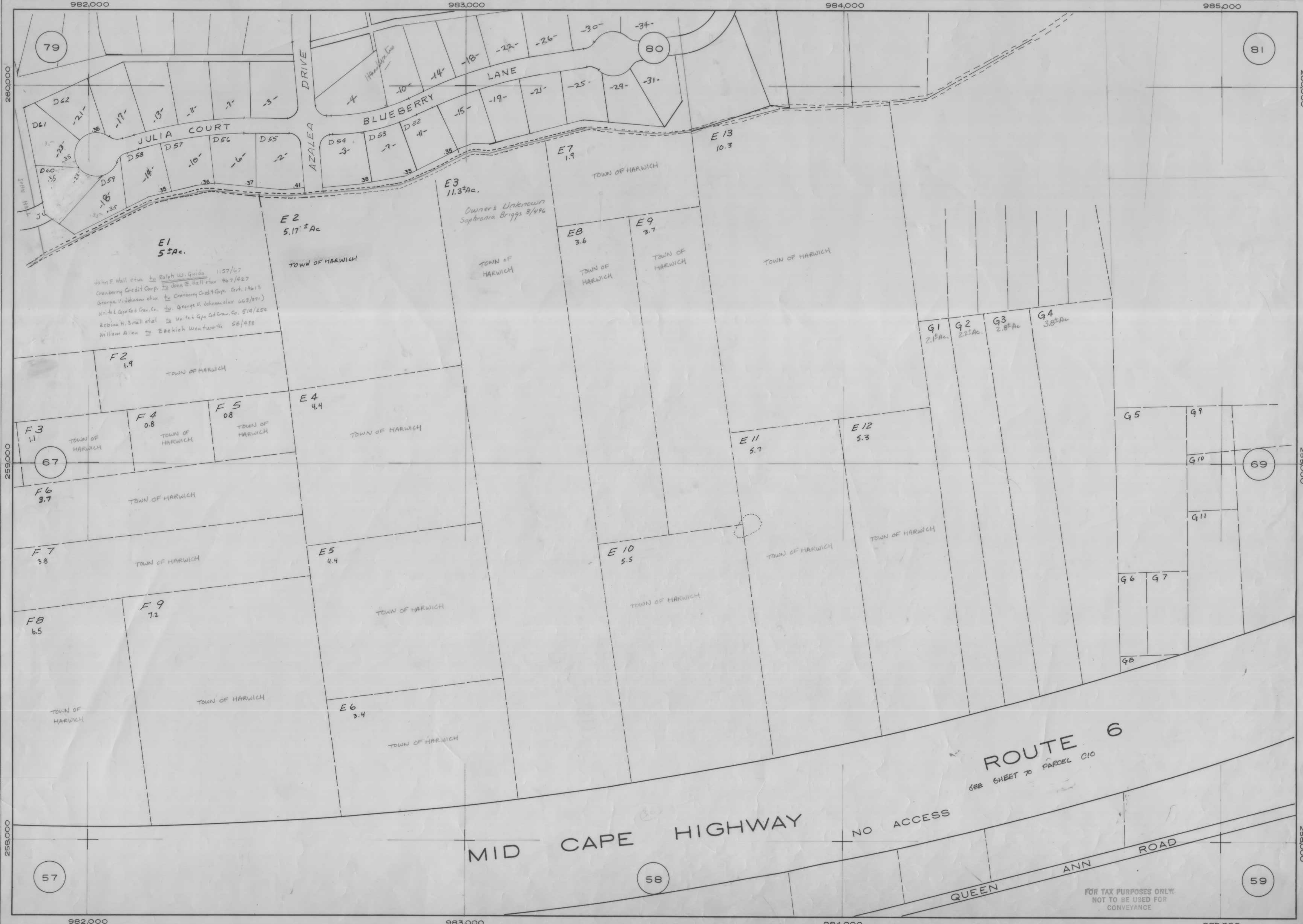
FOR TAX PURPOSES ONLY.
NOT TO BE USED FOR
CONVEYANCE



AA-20	AA-21	AA-90
A4-19	A4-22	A4-89
A4-18	A4-23	A4-88
A4-17	A4-24	A4-87
A4-16	A4-25	A4-86
A4-15	A4-26	A4-85
A4-14	A4-27	A4-84
A4-13	A4-28	A4-83
A4-12	A4-29	A4-82
A4-11	A4-30	A4-81
A4-10	A4-31	A4-80
AA-9	YARMOUTH	ROAD
AA-8	A4-32	A4-79
AA-7	A4-33	A4-78
AA-6	A4-34	A4-77
AA-5	A4-35	A4-76
AA-4	A4-36	A4-75
AA-3	A4-37	A4-74
	A4-38	A4-73
	A4-39	A4-72
	A4-40	A4-71
	A4-41	A4-70
	CHATHAM	ROAD
	A4-42	A4-69
	A4-43	A4-68
	A4-44	A4-67
	A4-45	A4-66
	A4-46	A4-65
	A4-47	A4-64
	A4-48	A4-63
	A4-49	A4-62
	A4-50	A4-61
	A4-51	A4-60
	A4-52	A4-59
	A4-53	A4-58
	A4-54	A4-57
	A4-55	A4-56
	W4	2.13
	L.C. 39872	-#94-



THE ORIGINAL MAP IS RETAINED IN THE OFFICE OF THE TOWN ENGINEER.
DATE _____ TOWN LAND SURVEYOR _____



John E. Hall et al. to Ralph W. Guide 11/57/67
Cranberry Credit Corp. to John E. Hall et al. 9/67/67
George V. Johnson et al. to Cranberry Credit Corp. Cert. 19613
United Cape Cod Grow. Co. to George V. Johnson et al. 6/27/67
Rebecca H. Small et al. to United Cape Cod Grow. Co. 5/14/68
William Allen to Ezekiel Wentworth 5/6/68

E3
11.3±Ac.
Owners Unknown
Sophronia Briggs 8/496

ROUTE 6
SEE SHEET 70 PARCEL C10

MID CAPE HIGHWAY

NO ACCESS

QUEEN ANN ROAD

FOR TAX PURPOSES ONLY.
NOT TO BE USED FOR
CONVEYANCE

